

Model-making workshop



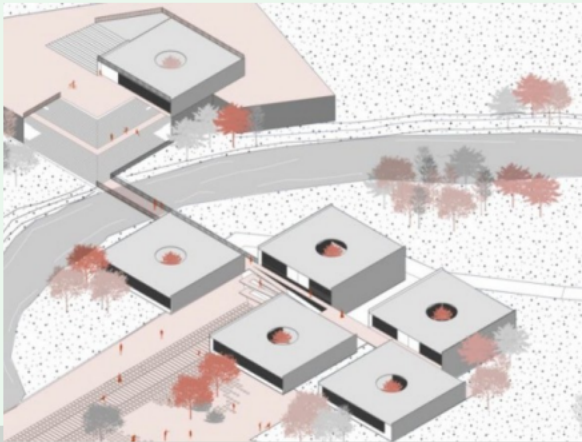
Participatory CPTED

The CPTED Participatory Model Workshop is a participatory tool used in the second phase of the CPTED project cycle.

It should be noted that, in accordance with the ISO CPTED 22341 standard, the CPTED project cycle consists of four phases: Diagnosis, Design, Participation and Evaluation.

The CPTED Model Workshop is used in the participatory Design phase once the CPTED Diagnosis has yielded objective and subjective indicators regarding the preferences and needs of the communities with whom we have worked.

The steps for conducting the CPTED Model Workshop are described below.



Steps for the CPTED Model Workshop

Step 1. Creation of an Educational Model



Step 2. Selecting the venue or space for the model-making workshop.

To do this, a venue (school, community center, sports hall or even a square) or a recognizable space that is easily accessible to the community taking part must be identified. It should have chairs and, if possible, toilets, as The workshop may last approximately 1 to 2 hours.



Step 3. Call for participants

In consultation with the key stakeholders and teams involved in the project, agree on the best format for the invitation and call for participants (mailing list, community loudspeaker, poster, social media), clearly specifying the date, time, and venue of the Participatory Model-Making Workshop.



Participatory Model Workshop CPTED

Step 4. Setting up the workshop

The facilitation team should arrive before the community members invited to participate and set up the Educational Model in the center of the room in a highly visible spot, with all the movable parts laid out to one side.

Step 5. Start of the workshop

The facilitation team should have a spokesperson/leader to welcome everyone and explain what the workshop will involve. They should explain the objectives and the sequence in which the various age groups will work. One member of the facilitation team should be recording and taking photographs throughout.



Participatory Model Workshop CPTED

Step 6. Participation by age group and gender

The lead facilitator should invite the various groups to approach the model in sequence and ask them to take the pieces from the side of the model; choose those they want to include in the project and place them in the appropriate locations.

The following groups are invited to take their turn: girls, boys, young people (women and then men), young adults (women and then men), adults (women and then men), and older adults (women and then men)

Each model completed by each age group is photographed from a bird's-eye view, and before moving on to the next group, the lead facilitator interviews the group that created the model in a conversational format, clarifying and exploring the environmental preferences they have placed on the model.

Each group's contribution is concluded with a round of applause.

Step 7. Closing the Workshop

Once all group members have participated, the lead facilitator expresses their thanks and commits to holding another meeting after the analysis to present the results.



Participatory Model Workshop CPTED

Step 8. Analysis of the Information

Using photographs taken of each model by age group, as well as videos and open interviews, the facilitation team analyses, prioritizes and systematizes the information from the Participatory Model Workshop to produce the Participatory Model Workshop Report, which will conclude with design guidelines agreed upon by the majority of workshop participants, based on the Innate Wisdom of the Local Environmental Expert in the area to be developed.

